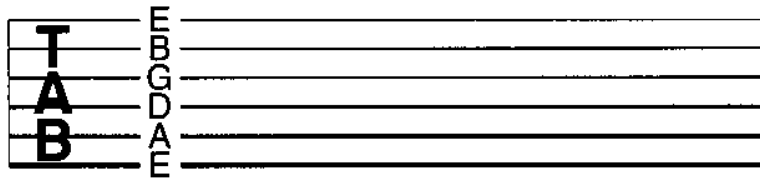


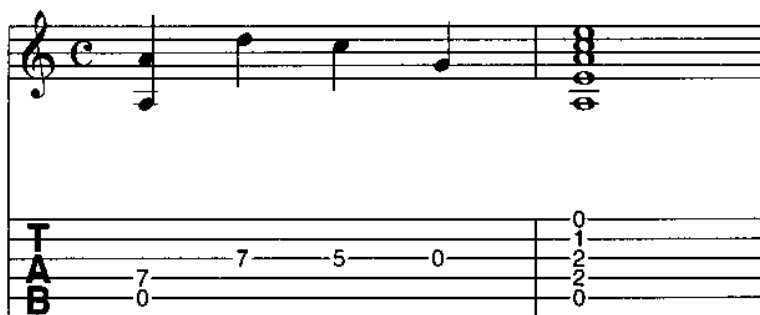
corcovado quiet nights of quiet stars	6
desafinado slightly out of tune	50
how insensitive insensatez	12
if you never come to me inutil paisagem	18
meditation meditação	24
one note samba samba de uma nota so	32
somewhere in the hills o morro nao tem vez (favela)	38
the girl from ipanema garota de ipanema	44
water to drink agua de beber	59
wave vou te contar	66
<i>tablature & instructions explained</i>	4

tablature & instructions explained

The tablature staff comprises six lines, each representing a string on the guitar as illustrated.



A number on any of the lines indicates, therefore, the string and fret on which a note should be played.



4th String	3rd String	3rd String	3rd String	1st String	OPEN	} Chord of A minor
7th Fret	7th Fret	5th Fret	OPEN	2nd String	1st Fret	
5th String				3rd String	2nd Fret	
OPEN				4th String	2nd Fret	
				5th String	OPEN	

A useful hint to help you read tablature is to cut out small squares of self-adhesive paper and stick them on the upper edge of the guitar neck adjacent to each of the frets, numbering them accordingly. Be careful to use paper that will not damage the finish on your guitar.

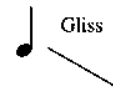
Finger Vibrato



Tremolo Arm Vibrato



Glissando



Strike the note, then slide the finger up or down the fretboard as indicated.

Tremolo Strumming



This sign indicates fast up and down stroke strumming.



This sign indicates that the notes are to be played an octave higher than written.

loco

This instruction cancels the above.



This note-head indicates the string is to be totally muted to produce a percussive effect.

P.M. = Palm mute