



Part 1	
Tetrachords	4
Building Major Scales	5
Triads	6
Triads: The 2nd Inversion	7
The Primary Triads in Major Keys.	8
The V7 Chord	9
Scale Degrees	10
Arpeggios	11
Building Minor Scales	12
More About 3rds, 5ths and Triads.	13
The Primary Triads in Minor Keys.	14
The Diminished 7th Chord.	15
Guide to Fingering	16

Part 2

Major Scales—Sharp Keys

Key of C Major	18
Key of G Major	20
Key of D Major	22
Key of A Major	24
Key of E Major	26
Key of B Major	28
Key of F# Major.	30
Key of C# Major	32

Part 3

Major Scales—Flat Keys

Key of F Major	34
Key of Bb Major	36
Key of Eb Major	38
Key of Ab Major.	40
Key of Db Major	42
Key of Gb Major	44
Key of Cb Major	46

Part 4

Minor Scales—Sharp Keys

Key of A Minor	48
Key of E Minor	50
Key of B Minor	52
Key of F# Minor.	54
Key of C# Minor	56
Key of G# Minor	58
Key of D# Minor	60
Key of A# Minor.	62

Part 5

Minor Scales—Flat Keys

Key of D Minor	64
Key of G Minor	66
Key of C Minor	68
Key of F Minor	70
Key of Bb Minor	72
Key of Eb Minor	74
Key of Ab Minor.	76

Part 6

Chromatic Scales

Part 7

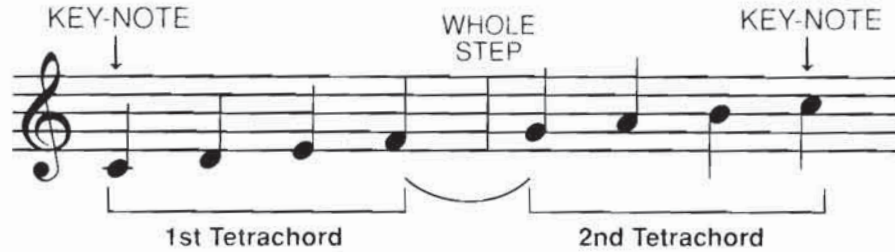
Enrichment Options

Harmonizing the Scales.	80
Blocked Scales, Accelerating Scales	81
Expanding Scales No. 1, No. 2	82
Scales in Double Thirds, Double Sixths, and Octaves	83
Scales—The Grand Form	84
Broken Triads	85
Triad Chain, Cadences	86
Triads (Block and Broken).	87
Major Scale and Arpeggio Fingering Chart	88
Harmonic Minor Scale and Arpeggio Fingering Chart	89



The **MAJOR SCALE** is made of **TWO TETRACHORDS** joined by a **WHOLE STEP**.

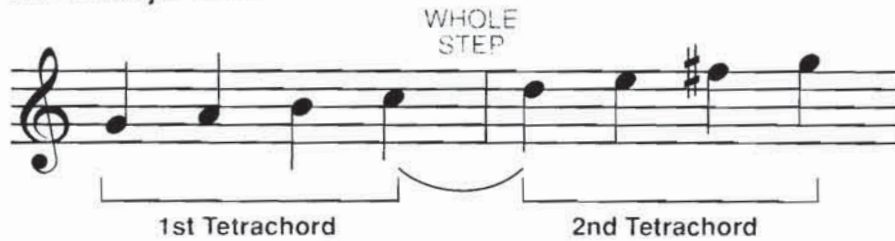
The C Major Scale



There is **NO # or b** in the **C MAJOR SCALE**.

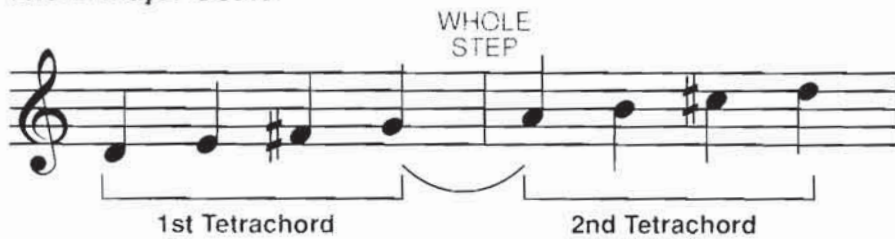
Each scale begins and ends on the note of the same name as that of the scale, called the **KEY NOTE**.

The G Major Scale



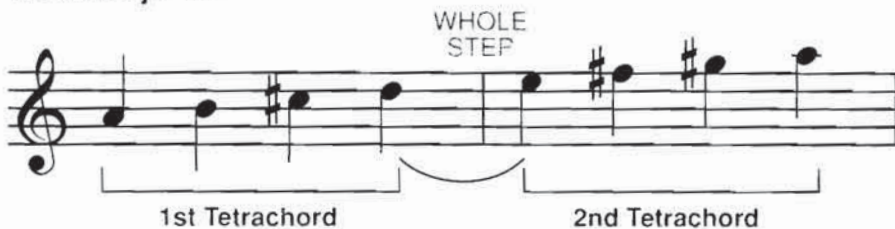
There is **ONE # (F#)** in the **G MAJOR SCALE**.

The D Major Scale



There are **TWO #'s (F#, C#)** in the **D MAJOR SCALE**.

The A Major Scale



There are **THREE #'s (F#, C#, G#)** in the **A MAJOR SCALE**.

IMPORTANT!

The 2nd tetrachord of C is the 1st tetrachord of G.

The 2nd tetrachord of G is the 1st tetrachord of D.

The 2nd tetrachord of D is the 1st tetrachord of A.

The 2nd tetrachord of A is the 1st tetrachord of E.

This overlapping pattern will continue around the Circle of 5ths!